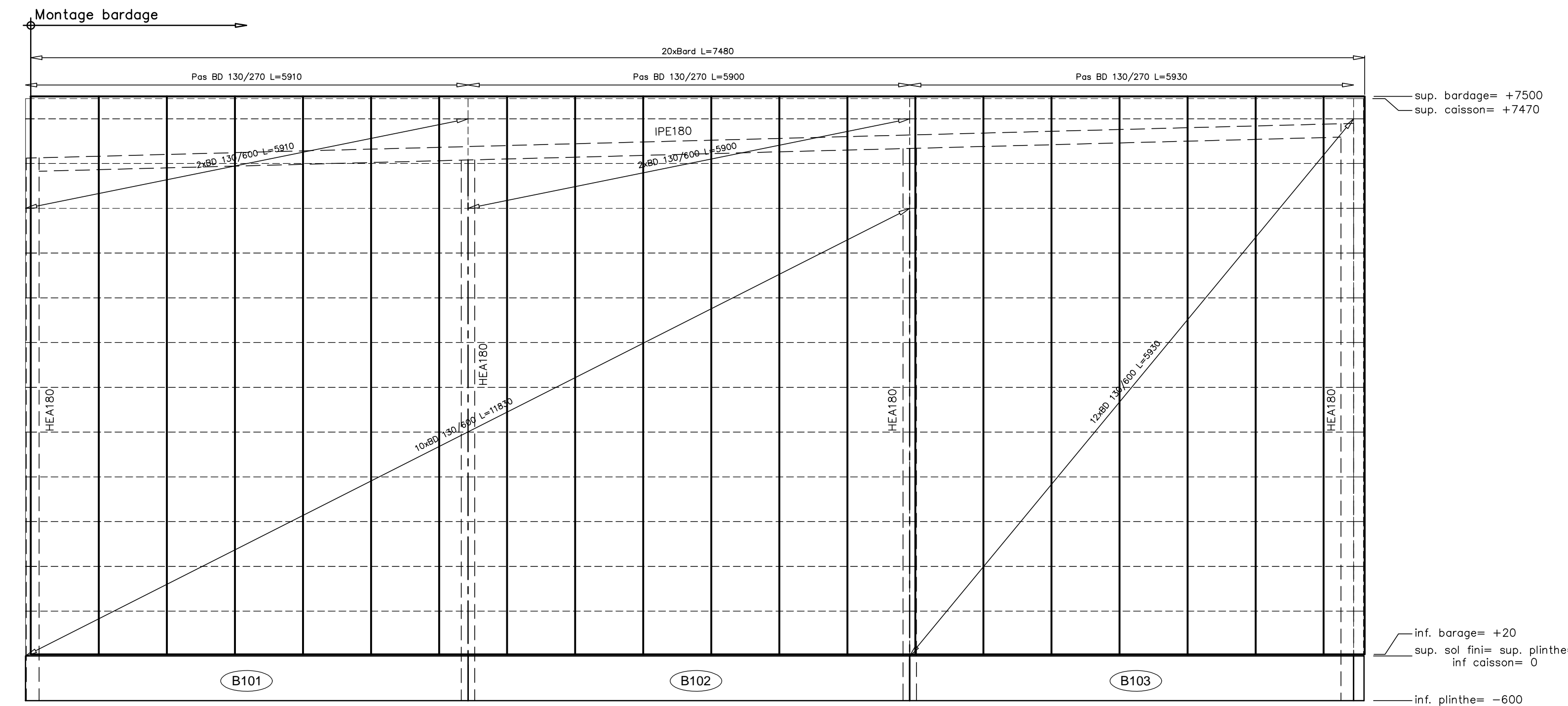
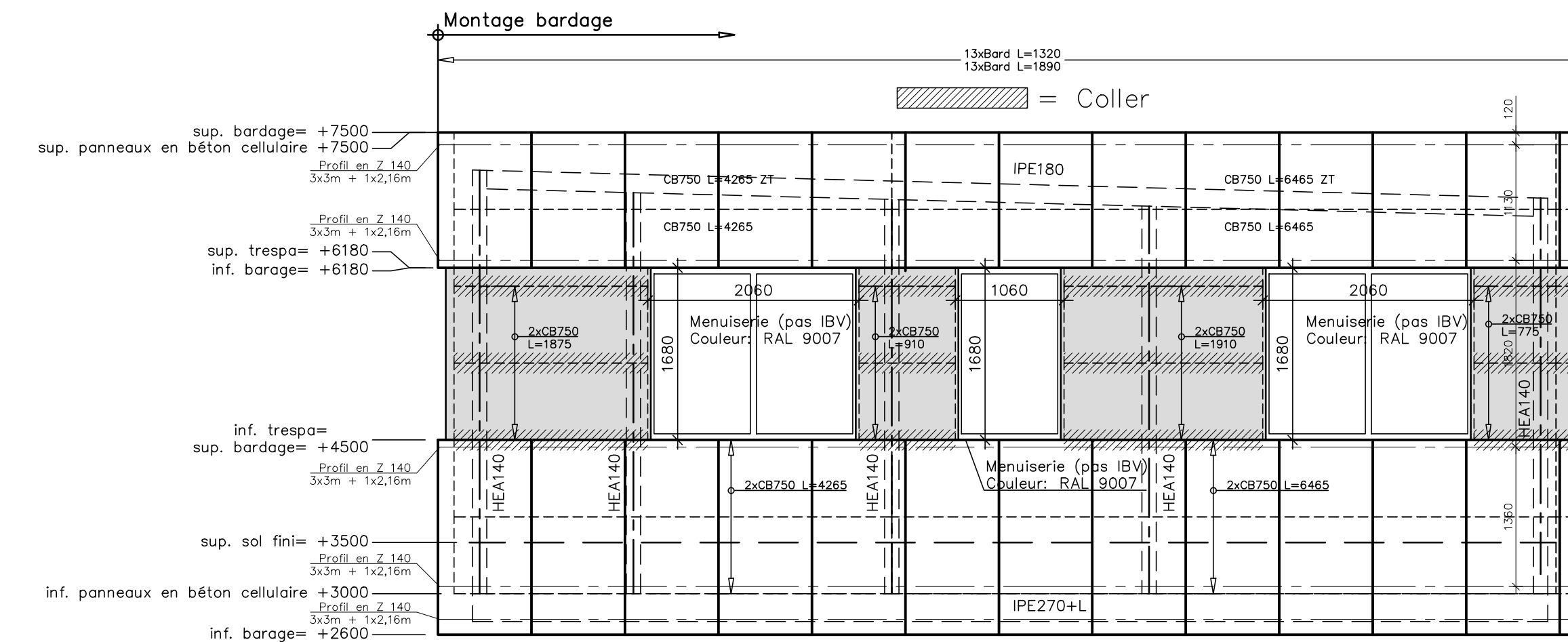


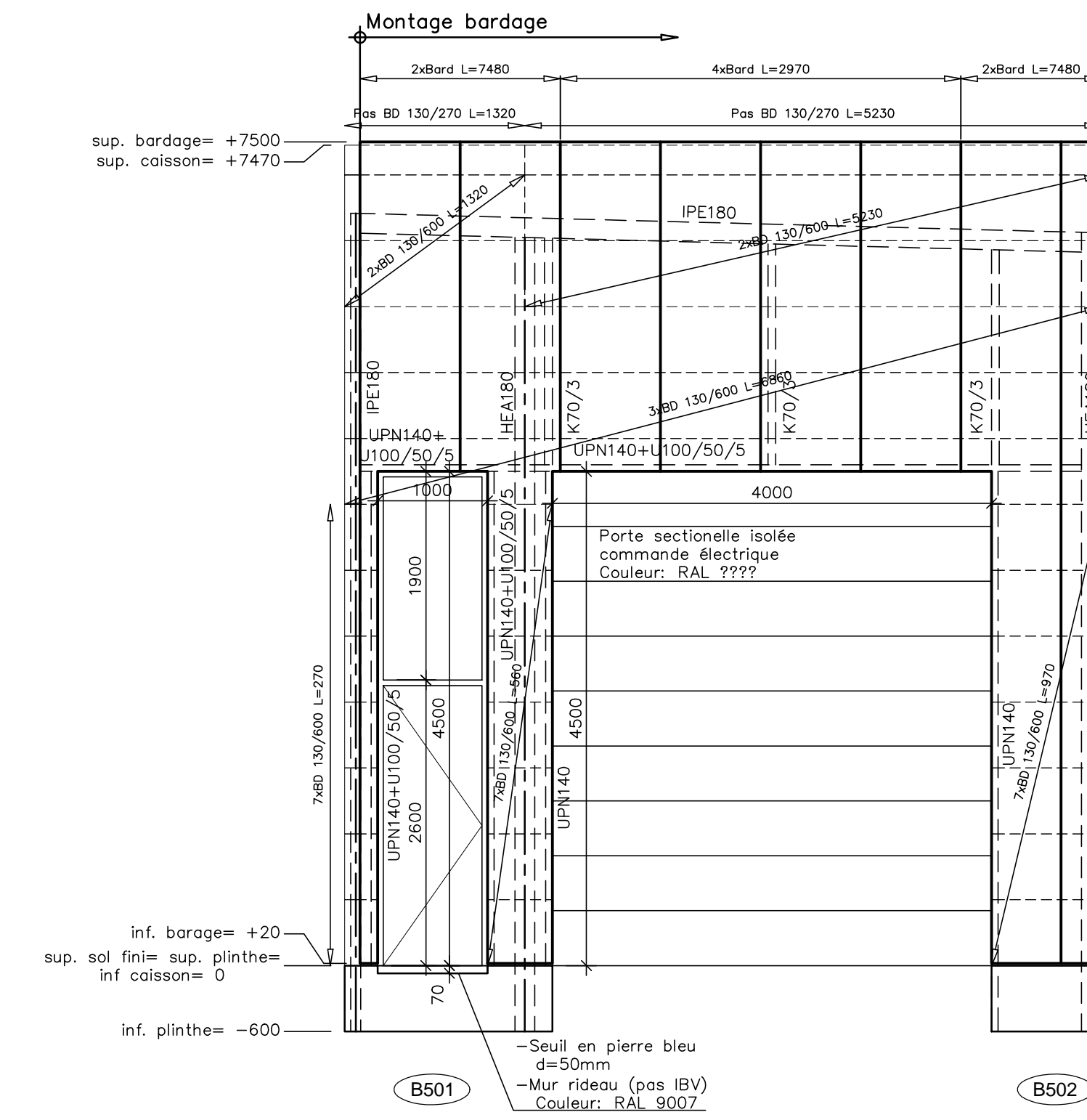
FACADE 2



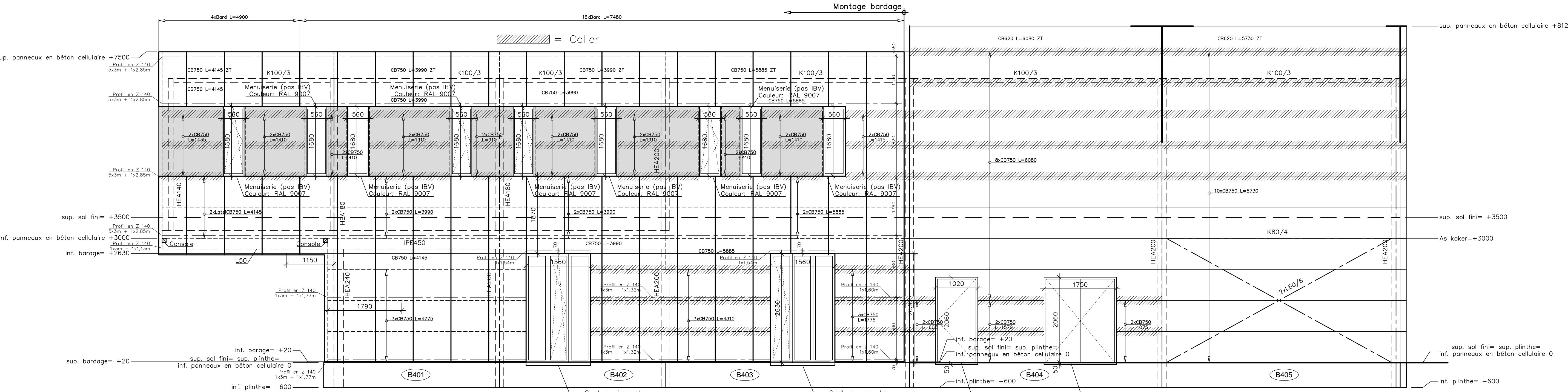
FACADE 1



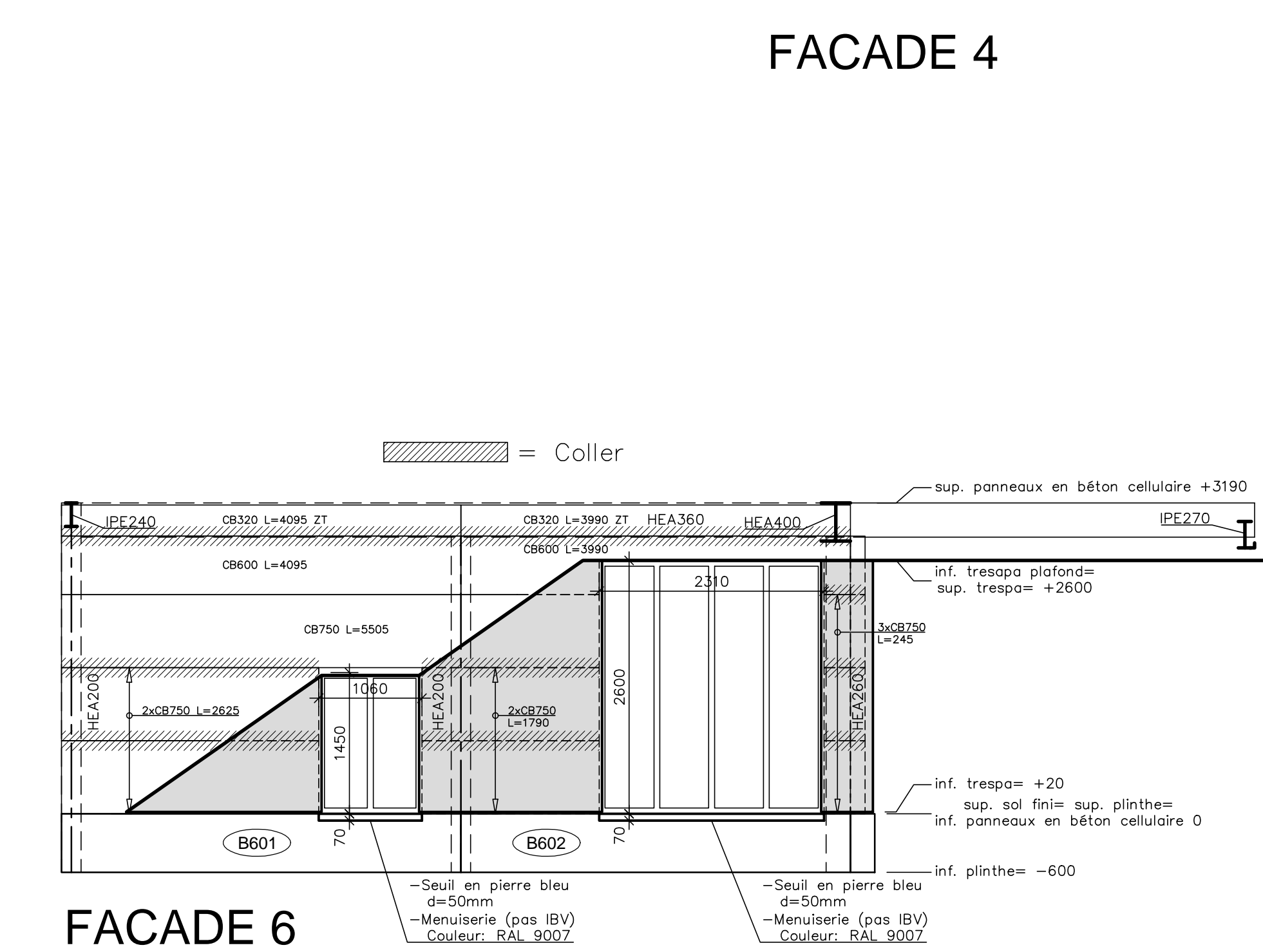
FACADE 3



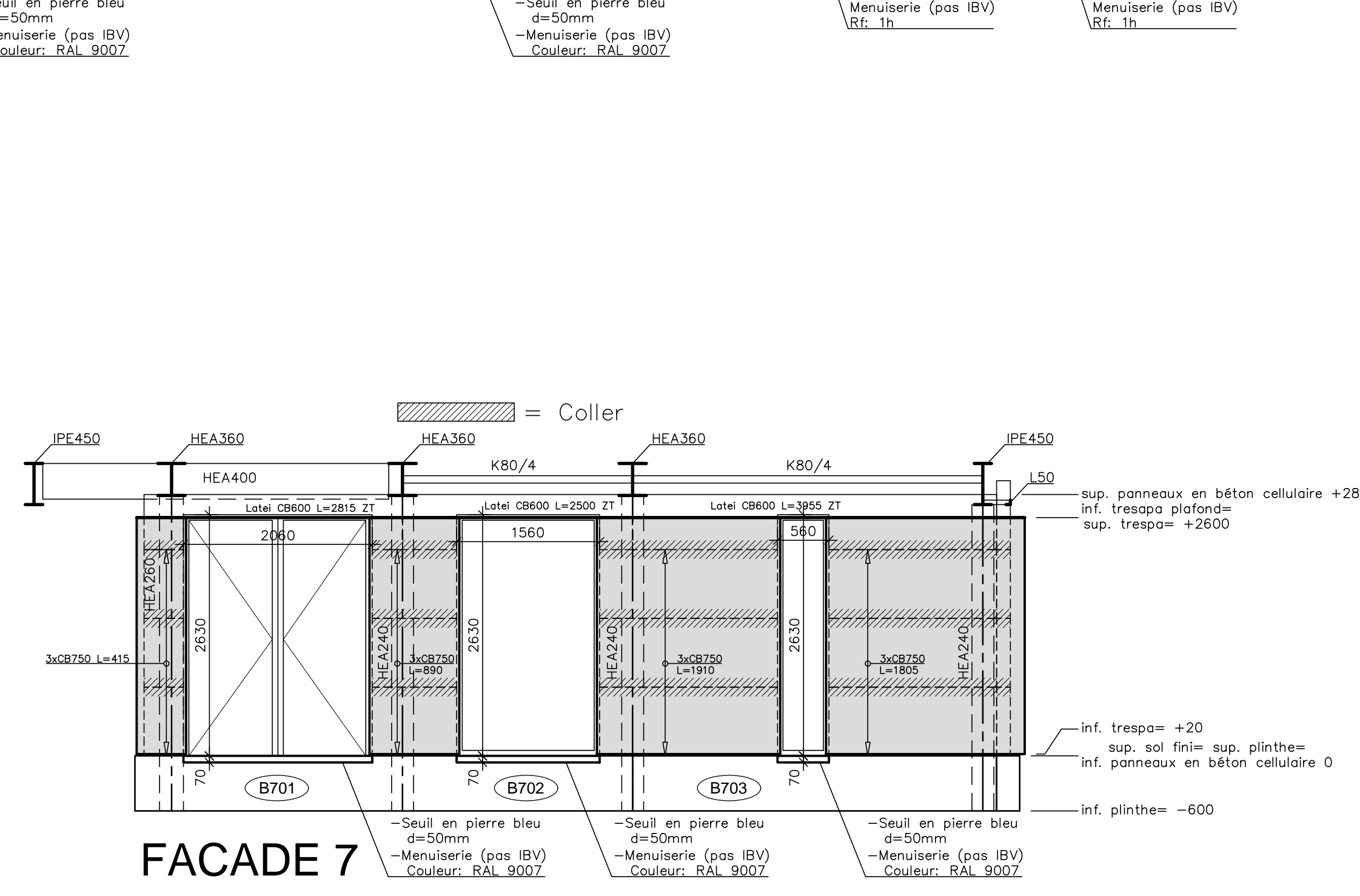
FACADE 5



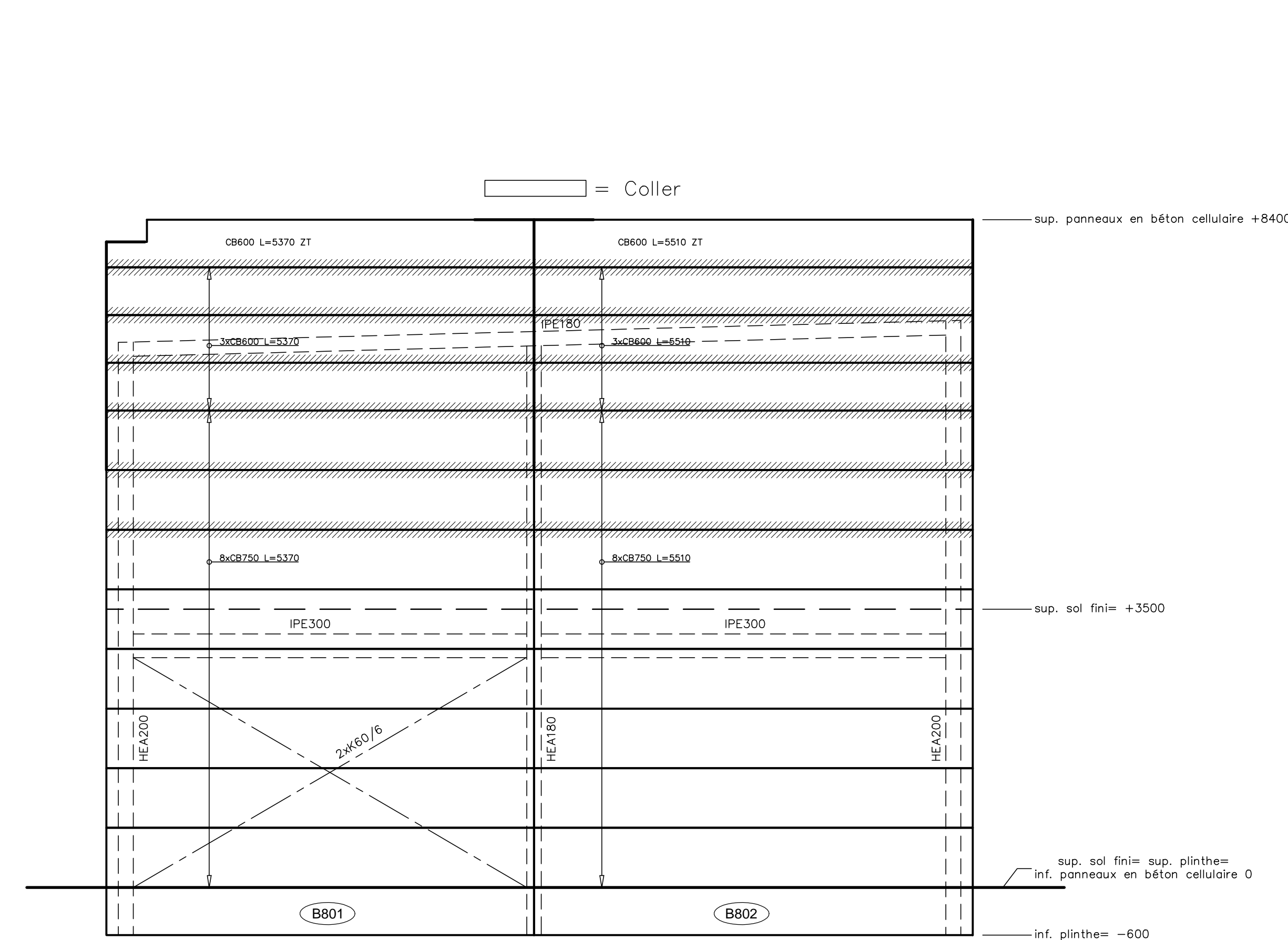
FACADE 4



FACADE 6



FACADE 7

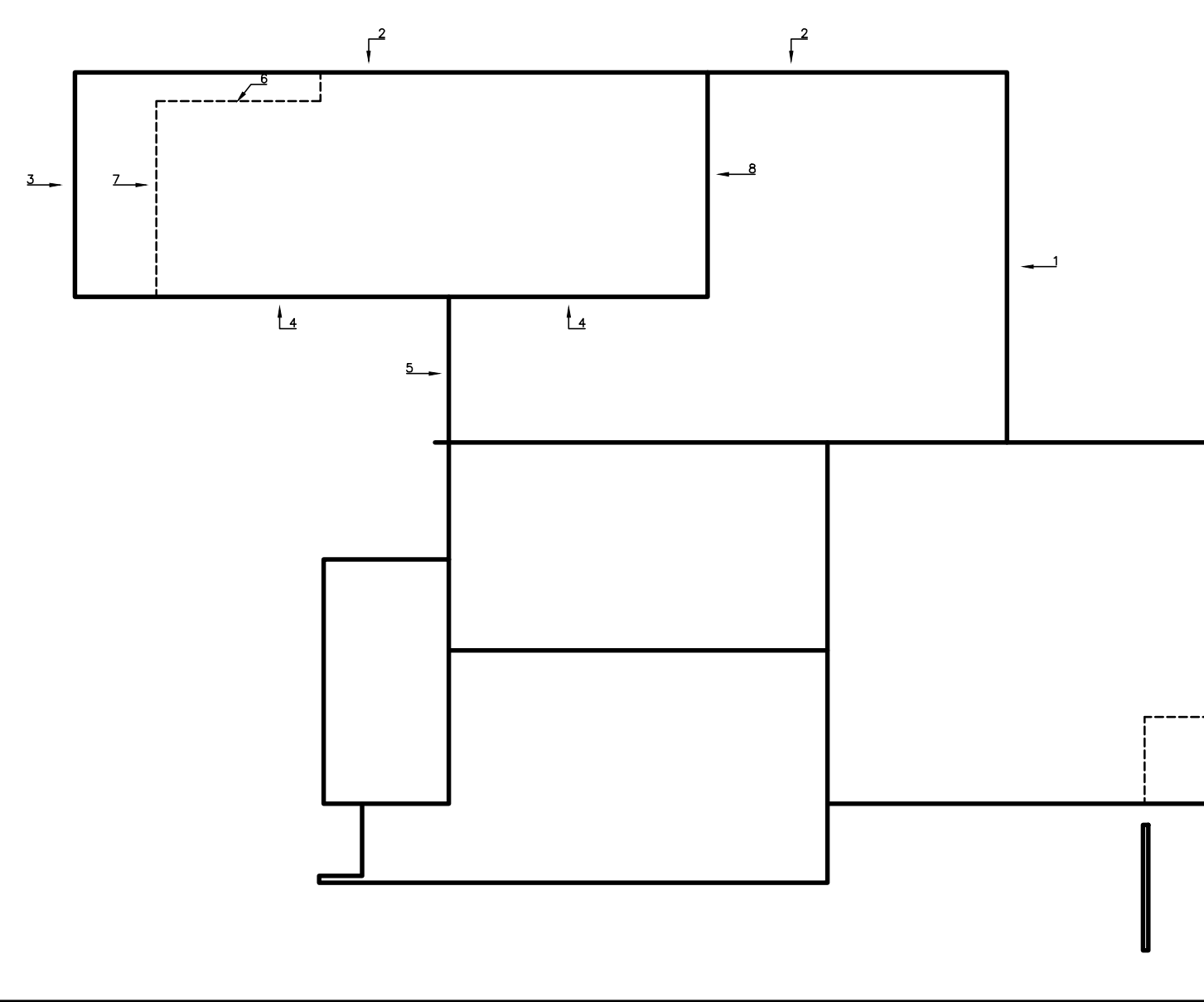



FACADE 8

Magec

MATERIAUX

- Bardage
 - * type: 18.76.988
 - * finition:
 - * couleur: Ral 9007
 - * épaisseur: 0.75mm
- Coisson
 - * type: 130/600
 - * finition: interieurcoating
 - * épaisseur: 0.75mm
- Tresspa
 - * type:
 - * kleur:
 - * épaisseur: 10mm
- Steeldeck stockage:
 - * type: 106.250.750
 - * finition: interieurcoating
 - * épaisseur: 0.88mm
- Plinthe en béton
 - * épaisseur: 250mm
 - * isolation: 60mm PIR continus isolés
 - * lisse
- Plinthe en béton
 - * épaisseur: 140mm
 - * lisse
 - * Rt: '120
- Plinthe en béton
 - * épaisseur: 140mm
 - * lisse
- Menuiserie extérieure
 - * type: aluminium T.O.
 - * couleur: Ral 9007
 - * Vitrage:





www.verelst.be

Industriebouw Verelst n.v.
 KMO-zone Vlerk boom 15
 tel +32 (0)15 75 37 35 fax +32 (0)15 75 68 50
 industriebouw@verelst.be

0-2080 Puits
 B-2080 Puits
 Nr. chantier: 2012/0078
 Nr. plan: 4/9

Magec

Adresse de chantier: Rue Jean Burgers 7, 7850 Enghien

Le propriétaire: _____ L'entrepreneur: _____

Plan de production

Echelle: 1/50 mesures en mm	Date	Description	Approuvé
A	7/5/2012	Plan pour approbation	Cynthia
B	14/6/2012	Staal op plan	Cynthia
C	30/7/2012	Staal op plan	Cynthia
D	13/9/2012	Aanpassingen	Cynthia
E	22/8/2012	Bijkomend staal	Cynthia
F	27/8/2012	Aanpassingen	Cynthia
G	13/11/2012	Facade 4 Tresspa	Cynthia

D:\17424012\Commercieel & Magec_Uitvoeringsschema\Commercieel & Magec_gps.dwg | Magec - facade 2 - 14 novembre 2012 11:16:15 (Cynthia Verelst)