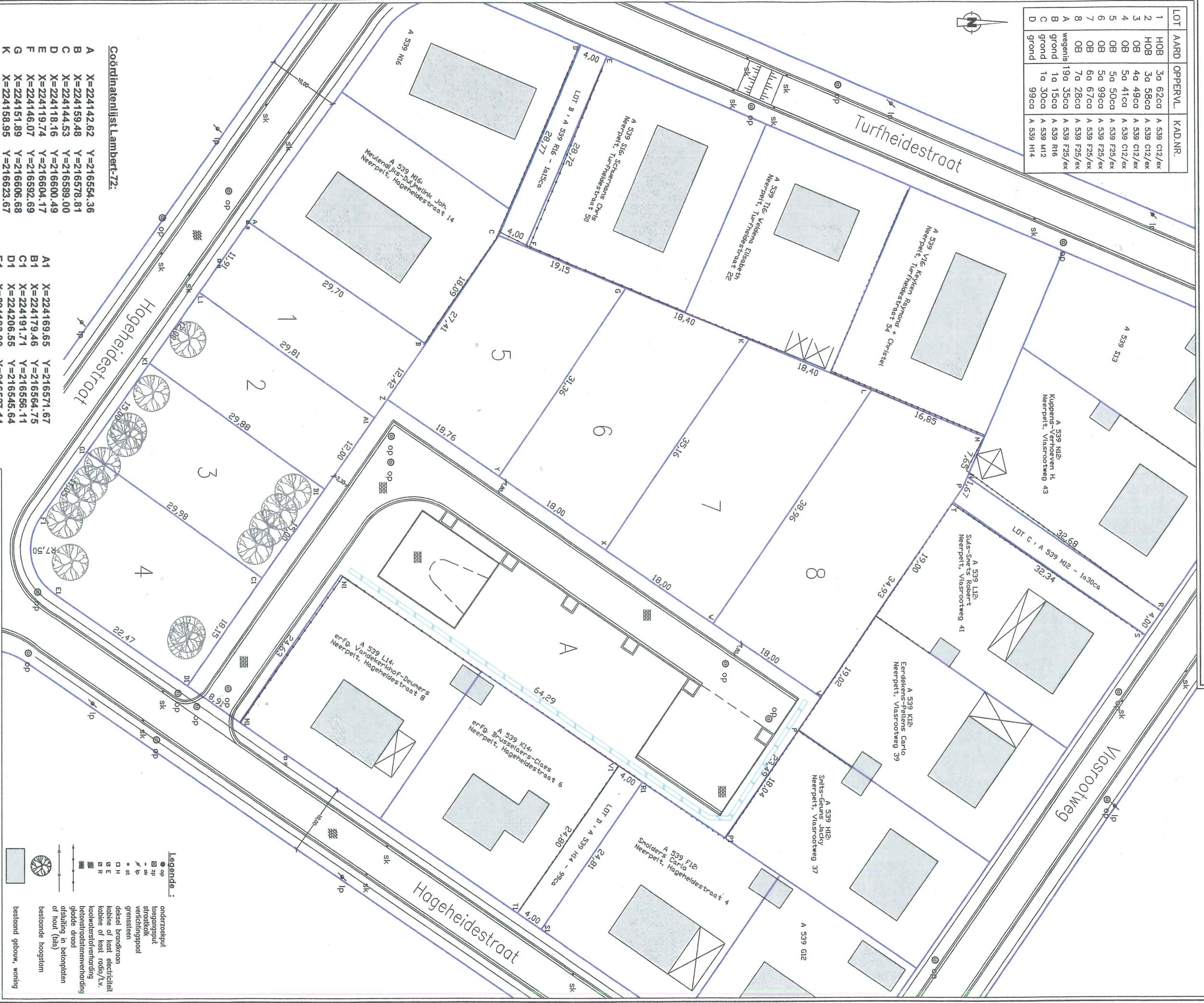


GEMEENTE NEEPERPUT 1^oafdeling

Sectie A Nr. 539 C12 & F25 : 61 a 91 ca Ter plaatse "Turfheide" & "De Hagen"

Afvalingsplan.

LOT	AARD	OPPERVL.	KAD.NR.
1	HOB	3o 62cc	A 539 C12/er
2	HOB	3o 58cc	A 539 C12/er
3	OB	4o 49cc	A 539 C12/er
4	OB	5o 41cc	A 539 C12/er
5	OB	5o 50cc	A 539 F25/er
6	OB	5o 99cc	A 539 F25/er
7	OB	6o 67cc	A 539 F25/er
8	OB	7o 28cc	A 539 F25/er
A	wagens	19o 35cc	A 539 F25/er
B	grond	1o 15cc	A 539 R16
C	grond	1o 30cc	A 539 M12
D	grond	99cc	A 539 H14



Coördinatenlijst Lambert-72:

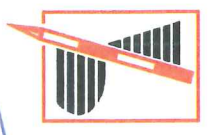
A	X=224142.62	Y=216554.36	A1	X=224169.65	Y=216571.67
B	X=224159.48	Y=216578.81	B1	X=224179.46	Y=216564.75
C	X=224144.53	Y=216589.00	C1	X=224191.71	Y=216556.11
D	X=224118.16	Y=216600.49	D1	X=224206.55	Y=216545.64
E	X=224119.74	Y=216592.69	E1	X=224193.80	Y=216527.14
F	X=224146.07	Y=216604.17	F1	X=224183.26	Y=216525.30
G	X=224151.89	Y=216606.68	G1	X=224174.28	Y=216531.72
H	X=224158.95	Y=216623.67	H1	X=224162.07	Y=216540.45
I	X=224166.01	Y=216640.66	I1	X=224152.31	Y=216547.43
J	X=224172.48	Y=216656.22	J1	X=224183.26	Y=216531.72
K	X=224166.01	Y=216640.66	K1	X=224174.28	Y=216531.72
L	X=224177.50	Y=216653.16	L1	X=224162.07	Y=216540.45
M	X=224179.97	Y=216653.16	M1	X=224152.31	Y=216547.43
N	X=224179.97	Y=216653.16	N1	X=224152.31	Y=216547.43
O	X=224179.97	Y=216653.16	O1	X=224152.31	Y=216547.43
P	X=224196.59	Y=216680.69	P1	X=224227.71	Y=216620.16
Q	X=224196.59	Y=216680.69	Q1	X=224227.71	Y=216620.16
R	X=224196.59	Y=216680.69	R1	X=224219.95	Y=216608.83
S	X=224196.59	Y=216680.69	S1	X=224238.04	Y=216591.35
T	X=224181.45	Y=216651.83	T1	X=224238.04	Y=216591.35
U	X=224208.32	Y=216633.43	U1	X=224217.70	Y=216605.53
V	X=224198.13	Y=216618.59			
W	X=224187.93	Y=216603.76			
X	X=224177.74	Y=216588.92			
Y	X=224187.93	Y=216603.76			
Z	X=224167.12	Y=216573.46			

Legende :

- ondergrondplot
- plot
- straat
- grens
- natuursteen
- baksteen
- beton
- elektriciteit
- water
- gas
- telefoon
- kabel TV
- riool
- afvoer
- weg
- spoor
- watertoren
- windmolen
- monument
- boom
- hek
- poort
- gebouw
- woning

SCHAAL: 1/500
Overpelt: 18/06/2012
Dossier: 2.474

De landmeter-expert
 beëdigd door de Rechtbank van Eerste Aanleg
 te Hasselt 09/11/2004
 Ingeschreven op het Tableau van de
 Federale Reden van Landmeters-Experten.
 (LAN 040948)



V. Dewitz

Ik waarborg enkel de door mij ondertekende plannen.