

M. A. DUVIVIER, ARCHITECTE  
100, rue de la République - 59100  
PIETON TEL. 07 82 54 10

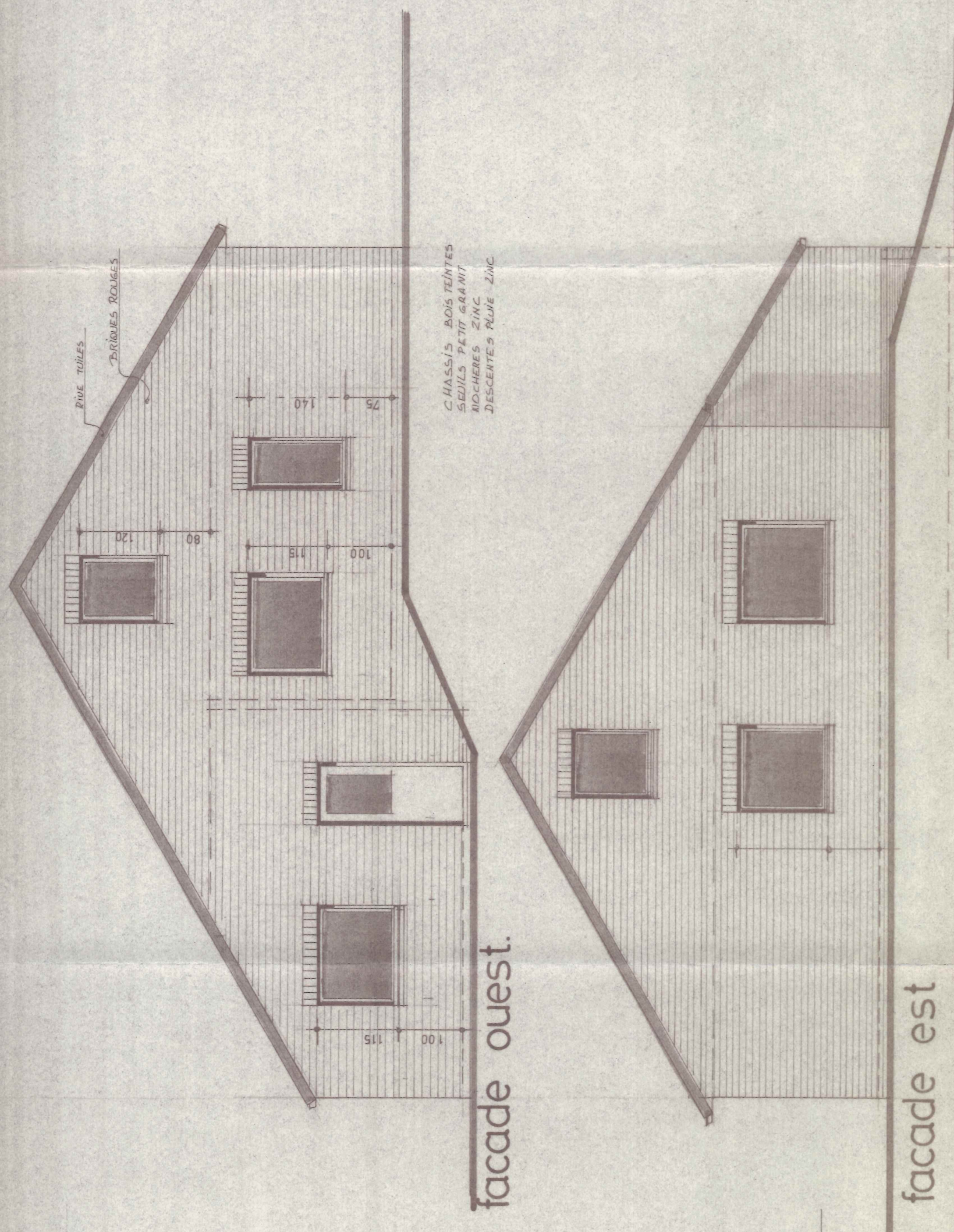
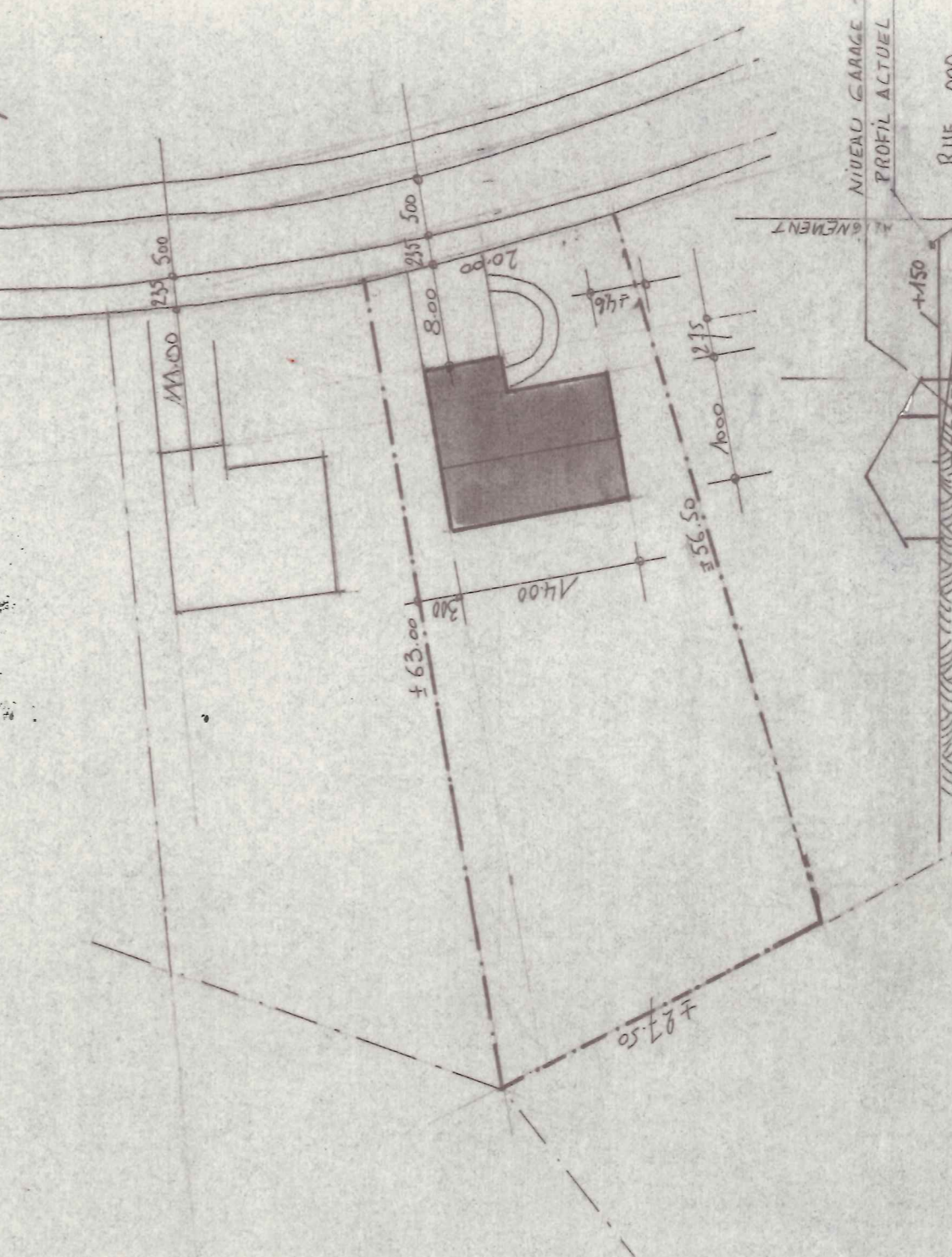


CHAUSSEE DE PHILPEVILLE  
VERS CHARLEROI  
Chemin n° 4a

OBJET DE LA DEMANDE  
14

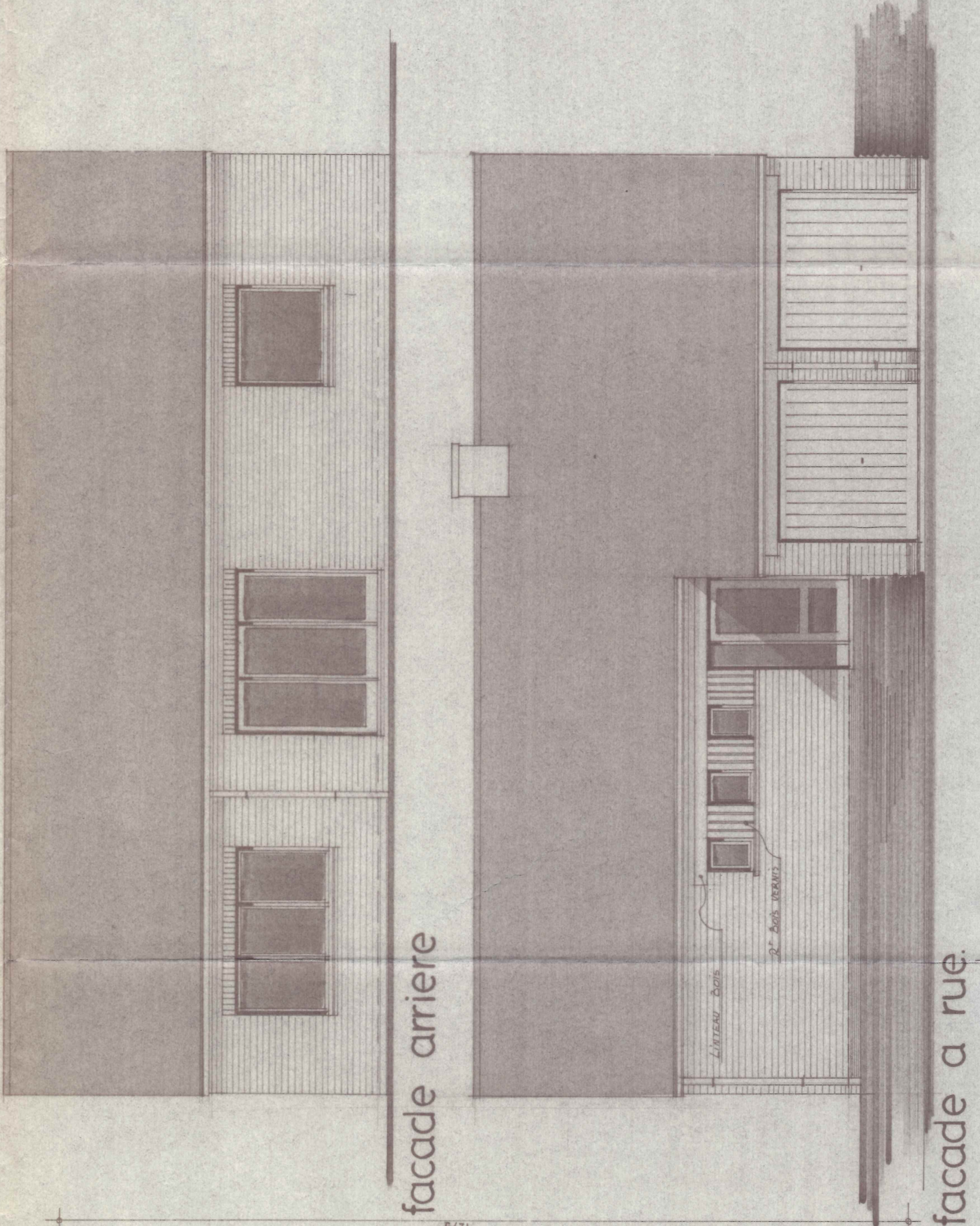
situation

implantation  
2 mm / M



CHASSIS BOIS PEINTS  
SEUILS PETIT GRANIT  
MOCHES ZINC  
DESCENTES RUE - ZINC

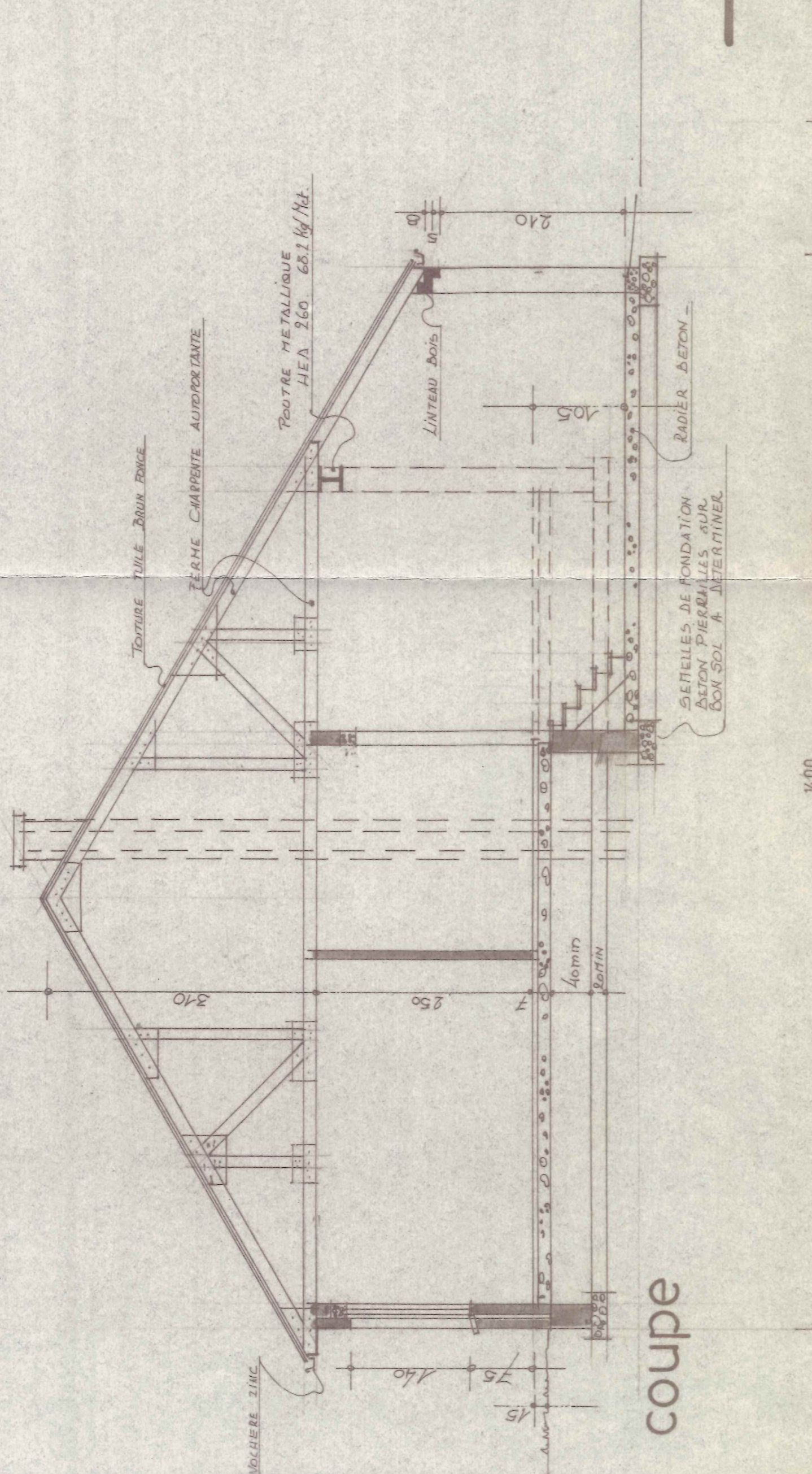
facade ouest.



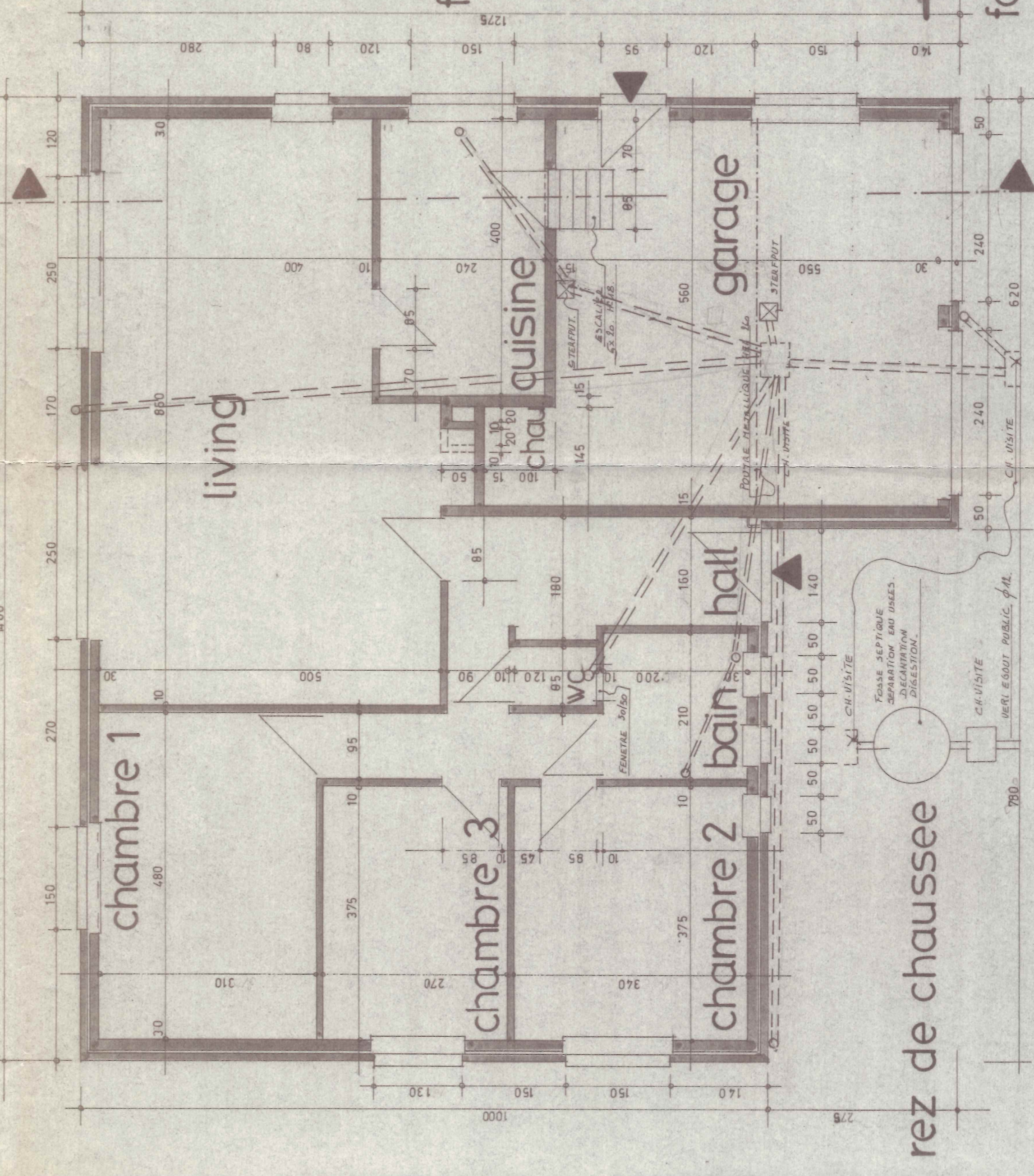
facade est

facade arriere

facade a rue.



coupe



rez de chaussee